



OEM VERSION - BLACK BODY 200

OEM BLACK BODY 30°C...200°C (86°F...392°F)

Datasheet & Sales

Release date: 25th November 2020

Revision Number: 201125

OEM Black body Key features description

Continuous temperature settings	30 °C – 200 °C (86 °F to 392 °F) with 0.1 °C (°F) single step
Big measurement area	100mm stabilized diameter area with pyramid shapes for increasing stability of emission and decreasing the reflective effects
Outstanding stability	Temperature stability of the central area better than: ± 0.05 °C / hour at 40°C set-value (± 0.09 °F / hour at 104 °F set-value) ± 0.06 °C / hour at 100°C set-value (± 0.11 °F / hour at 212 °F set-value) ± 0.07 °C / hour at 150°C set-value (± 0.13 °F / hour at 302 °F set-value)

OEM Black body technical specification

Surface emissivity	0.95 \pm 0.005 for LWIR spectrum
Temperature range	30 °C to 200 °C in continuous steps by 0.1 °C (86 °F to 392 °F by 0.1 °F) <i>(the lowest set-value must be higher about 5 °C (9 °F) from ambient temperature)</i>
Aperture diameter	100mm
Long-term time stability	Better than $\pm 0.08\%$ (Precise PID regulation with 16 single thermal elements, measured/checked by certified external PT100 probe)
Space thermal non-uniformity	$\leq 0,3$ °C (0.5 °F) (temperature dispersion)
Control interface	RS485 control serial interface (optional)
Display	OLED Display: real-time temperature measurement, set-value, visualization
Temperature memory	Set temperature value can be saved to the memory and automatically loaded when BB200 connected to power supply, memory function available
LED signalization	LED signalization for different modes (warming, stabilization, cooling, electronics overheating)
Temperature units	Celsius and Fahrenheit (user configurable)

Power supply, weight & dimensions

Input supply voltage	24 VDC, Coaxial 2 x 6.4 mm, outer shell – GND, power supply adapter 110/230 VAC included in the package
Power consumption (avg.)	24 W (up to 100°C temp. range), 96W (up to 200°C temp. range)
Weight	< 1 200 grams without the tripod (tripod holder included in the package)
Dimensions (Diameter, Depth)	117 mm x 88 mm (without aluminium stand or cabling)
Mounting holes	1 x 1/4-20 UNC thread
Housing material	Special Teflon body with aluminum parts

Environmental

Operating temperature range	10 °C to +30 °C (50 °F to +86 °F)
Storage temperature range	-30 °C to +60 °C (-22 °F to +140 °F)
Relative humidity	Non condensing conditions
In the package	Black body, calibration certificate, ball adapter, power supply, transport case



Sales & Marketing information

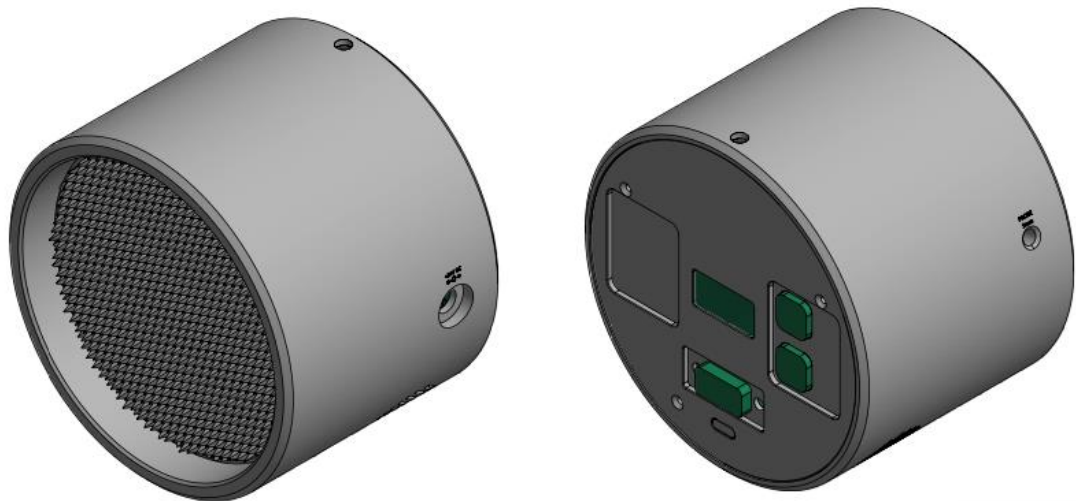
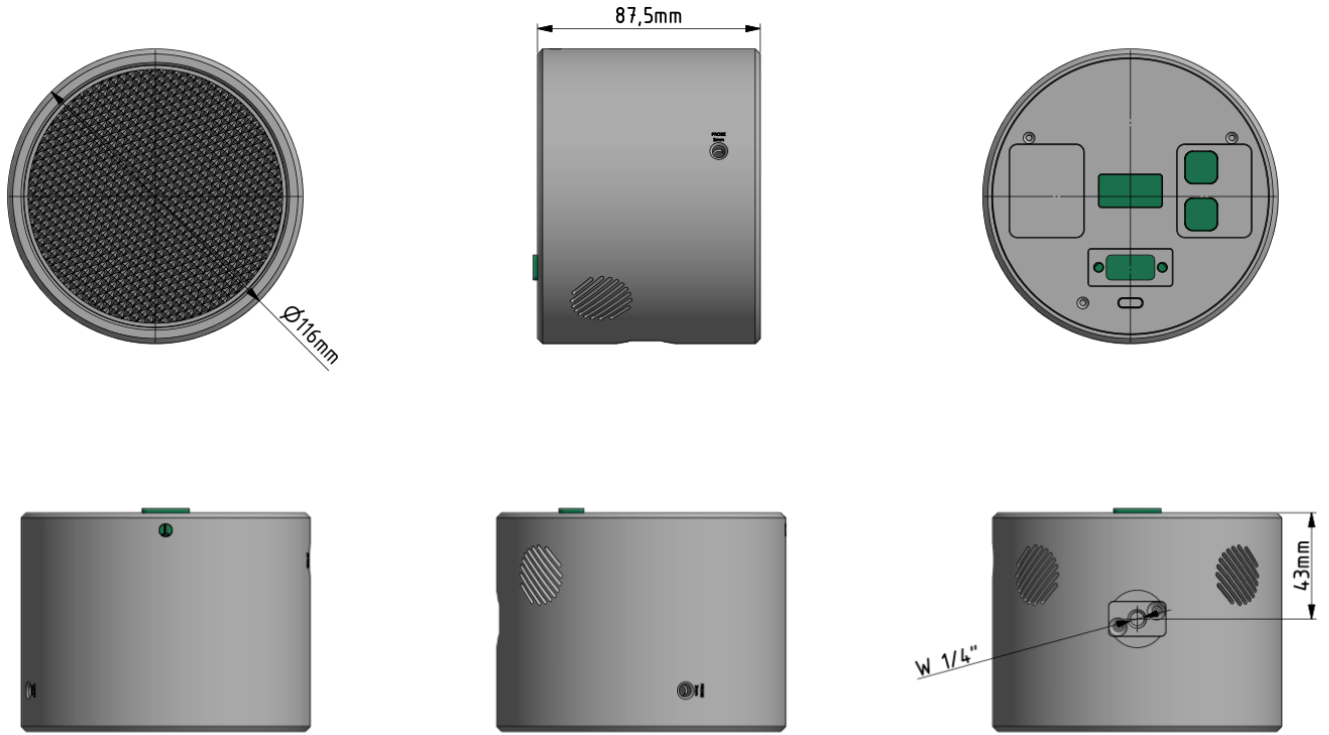
Article number	Product	OEM price in EUR / USD
BB200-OEM	Black body 200 – OEM version	ask for quotation on sales@workswell.eu
Minimum order quantity: 4 units		
Delivery time: 2 – 4 weeks		
Warranty: 1 year, can be extended for 99 EUR (109 USD) to 2 years		
Calibration: Each black body is calibrated by certified devices and manufactured according to TUV standards		
Included in price: Lasered company logo and article number according to request		
Article number and logo information: Article number max. 10 characters, logo in .ai format needs to be provided		
Standard package: Black body, calibration certificate, ball adapter, power supply, transport case		
Package information: Delivered in paper transport case The hard transport case can be bought for 95 EUR – one hard case is made for 2 units of BB200		

Ordering email: orders@workswell.eu

Company logo and article number can be defined – included in price



OEM Black body drawings



Workswell BB200



Contact information

WORKSWELL IN THE WORLD



Find our partners worldwide

www.workswell.eu/where-to-buy

SALES DEPARTMENT

Website: www.workswell.eu

E-mail: sales@workswell.eu

Mobile: +420 737 547 622

COMPANY CONTACT

Website: www.workswell.eu

E-mail: info@workswell.eu

Mobile: +420 725 877 063

OFFICE LOCATIONS

Europe - Prague

United States of America

Global partner network

www.workswell.eu

